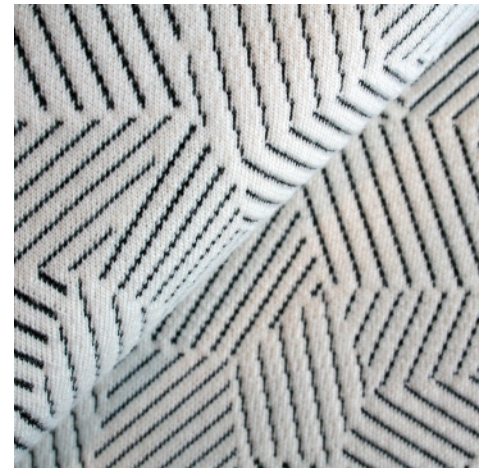


<b>Number of colours</b>	27
<b>Width</b>	160 cm (+/- 2%)
<b>Weight</b>	600 gr/m <sup>2</sup> (+/- 5%)
<b>Composition</b>	60% wool 20% polyamide 20% polyester
<b>Design by</b>	Sylvain Willenz



Test	Methode		Result
<b>Abrasion</b>	EN ISO 12947-2	martindale	> 80.000
<b>Pilling</b>	EN ISO 12945-2	5.000 rubs	4
<b>Colour fastness to rubbing</b>	EN ISO 105-X12	dry / wet	4 - 5 / 4 - 5
<b>Colour fastness to light</b>	EN ISO 105-B02		6


<b>Flame resistance</b>	EN 1021-1/2 BS 5852 part 1 DIN 4102-B2 US Cal. Tech. Bull. 117	cigarette / match cigarette / match surface ignition
please note flammability performance is dependent on type of foam used		

<b>Treatment upon request</b>	flame resistance soil and stain resistance	M1 / Crib 5
-------------------------------	---	-------------

<b>Environment</b>	Oeko-Tex® standard 100 all chemicals used are registered under the REACH legislation ecologically produced in the Netherlands
--------------------	---

<b>Feature</b>	stretch
----------------	---------

<b>Aplication</b>	contract and domestic not suitable for curtains
-------------------	--

<b>Maintenance</b>	 further cleaning advise available on our website
--------------------	---

<b>Notes</b>	slight differences in colour may occur foreign fibres may occur in light colours  handle this exclusive knit with care knits are of a different stucture than woven textiles, therefore should be processed and applied correctly  please consult the user guideline available on our website
--------------	--

technical specifications are subject to change without prior notice, updated results available on our website